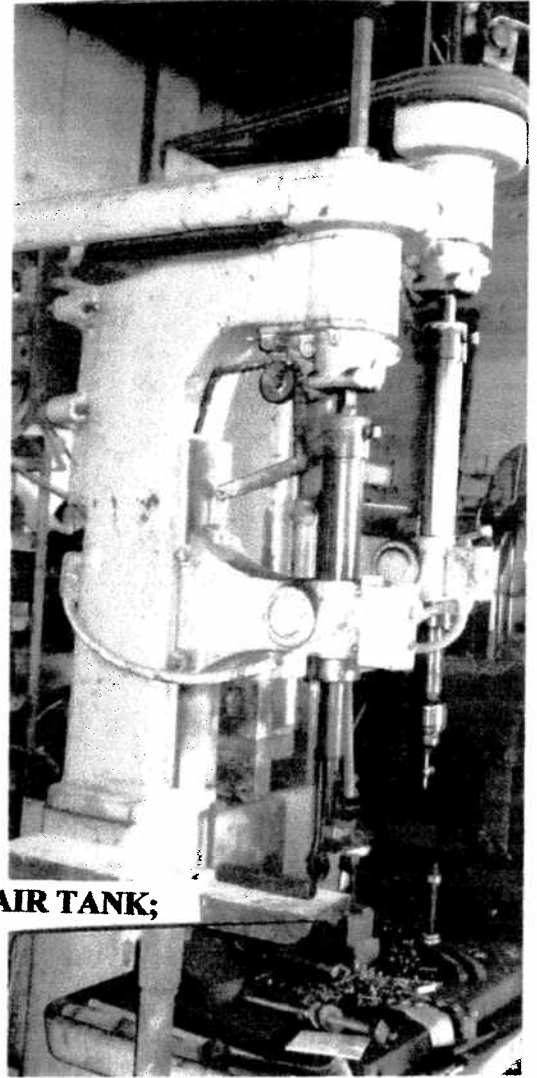


Blacksmith Auction

August 1, 2009 10:00 AM

New Lisbon, In.

We will offer the following for auction located at the old school house,
South east corner of New Lisbon, about 3/4 mi North of I 70 at the
Wilbur Wright Exit # 131



Milwaukee 24" 8' lathe; 14' Step to shaper;
Footbert drill press with power feed;
Saimp mill verticle tapper; Cincinnati 24x24x6 Shaper;
Cincinnati mill d/ # 50 taper ; cold & coke forge;
1 # 2 Cincinnati mill; 2- Bridgeport mills, 1 ½ & 2 hp.
Pneumatic 400# Chambers burg Hammer;
Erie 200# pneumatic hammer;
Plenishing 5 hp hammer; Bradley 100 # Helm hammer;
Anvils including a 6" fisher; bottom swedge blocks;
Cut off saw; 5 hp 12" grinder; large Snag grinder; buffer;
several post drill presses; 2 spindle drill press; 6 leg vises;
large assortment of drill bits; glass showcase;
14" Chicago shaper; Landis cobblers bench; 3 Forge blowers;
vises of all kinds; 2 -250 amp arc welders, one stick and
one tig'; 12 gage Libert shear; 6' Combination box brake;
hand Shear; bending machine; 3' metal roll;
6 Beading machine for forming; machinest
wrenches; corn sheller; pallet jack; walker jacks;
air compressors; big wrenches; lots of scrap iron;
2 mandrels; Niagra 4' Treadle shear;
tons of hand snips; 5 ton chain hoist; 5 roots blowers;
Staple machine; Hydraulic jacks; house jacks;
4 CYL INGERSOL RAND AIR COMPRESSOR/ 500 GALLON AIR TANK;
1000 gallon air tank; 3 cannons; Tire ring steel ring;
Old farm equipment; old threading machine;
John Deere and IHC horse drawn mowers; horse drawn disc;
metal shear, big Collections include: chain saws;
Old auto headlights; railroad wrenches;
Plus many more items to numerous to numerous to mention.

Jim Claar Owner

Note: This only a partial listing so please plan to attend this auction. Only
The large items are listed, none of the smaller items are even mentioned.
This will be a large auction and we may run two rings.

Shirley Poore
AU01027910
765-332-2489

Auctioneers

Rex Siglar
AU01005205

Food

